

# MONTHLY MEMBERSHIP PROGRESS REPORT

District 28 U

Results as of: 10/31/2023

GMT:

LOCATION UTAH

GMT CA

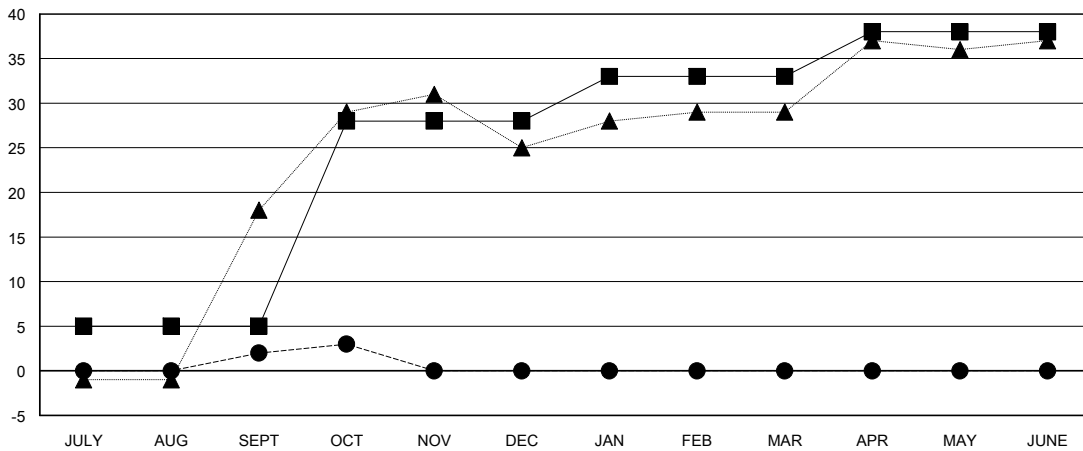
Clubs			
RESULTS FOR 2023-2024			
QUARTER	NEW CLUB GOAL	NEW CLUBS	DROPPED CLUBS
JULY/AUG/SEPT	0	0	0
OCT/NOV/DEC	1	0	0
JAN/FEB/MAR	0	0	0
APR/MAY/JUNE	0	0	0

Members			
RESULTS FOR 2023-2024			
QUARTER	MEMBER GROWTH NET GOAL	MEMBER GROWTH ACTUAL	DROPPED MEMBERS ACTUAL (including transfers)
JULY/AUG/SEPT	5	17	10
OCT/NOV/DEC	23	7	5
JAN/FEB/MAR	5	0	0
APR/MAY/JUNE	5	0	0

GOALS AND ACTUAL NEW CLUBS CUMULATIVE



GOALS AND ACTUAL MEMBERS CUMULATIVE



DROPPED CLUBS: 0	7 CLUBS OF 27 ADDED 1 OR MORE NEW MEMBERS	<b>GENDER DISTRIBUTION</b>
		MALE 331 (72.27%)
		FEMALE 127 (27.73%)
<b>DROPPED MEMBERS</b>	<a href="#">CLICK HERE FOR CUMULATIVE MEMBERSHIP DATA</a>	TOTAL FAMILY UNIT MEMBERS 81
DECEASED 3		FAMILY MEMBERS PAYING HALF DUES 41
CLUB CANCELLED 0		
OTHER 12		
<b>TOTAL 15</b>		